



Justrite Safety Group

409 Sof-Tred Plus™

Construction of microcellular vinyl with pebble pattern



Ergonomic, Anti-fatigue & Safety Matting - Dry Areas Linear Lengths 409 Sof-Tred Plus™

Basic worker comfort derived from 9.4 mm thick worker platform comprised of a construction of microcellular vinyl consisting of millions of air bubbles that provide basic ergonomic benefit.

- Pebble pattern provides non-directional traction and is easy to clean
- All four sides are bevelled and sealed to minimize tripping hazards

Recommended use

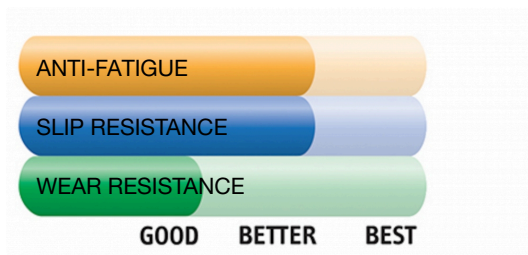
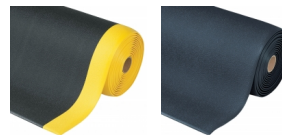
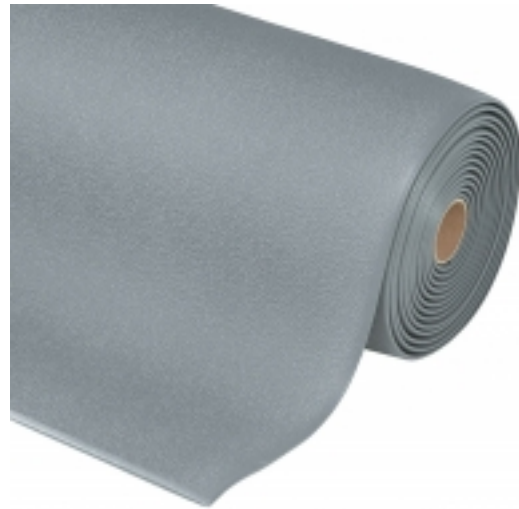
- Dry Areas
- For placement in manufacturing plants, assembly lines, picking, packing and logistics warehouses, individual work stations.
- Light duty

Colors:

- Black
- Black/Yellow
- Grey

Sizes:

- 60cm x 91cm
- 91cm x 150cm
- 122cm x 18.3m
- 60cm x 18.3m
- 91cm x 18.3m



Ergonomic, Anti-fatigue & Safety Matting - Dry Areas Linear Lengths Sof-Tred Plus™

General

Brand	Notrax
Category	Dry Areas Linear Lengths
Product Number	409
Product Family	Industrial & Commercial Matting
Product Group	Ergonomic, Anti-fatigue & Safety Matting
Product Name	Sof-Tred Plus™
Recommended use	For placement in manufacturing plants, assembly lines, picking, packing and logistics warehouses, individual work stations.
Shipping Location	Barendrecht 2992SB, NL, Moselle, MS 39459, US
Type	Dry Areas - Comfort™
Update trigger	20210310-1301
Usage Intensity	Light duty

Sustainability

Reach	Reach compliant (Registration, Evaluation, Authorization and Restriction of Chemicals).
Sustainability	Recyclable material
Warranty	1

Tests

Abrasion Resistance 1000	17.06%
Abrasion Resistance 500	8.4%
Compression Deflection 1.4	0.21 cm
Compression Deflection 2.8	0.06 cm
Elongation	109.4%
Fire rating US	Pass
Hardness	25 Shore A
Slip Rating	R10
Coefficient Friction Dry	0.89
Surface Flammability	Pass
Tear Strength	8.2 lb

Technical Specifications

Application	Industrial Environments
Backing	Microcellular vinyl
Edges	Bevelled edges on all sides
Material	Microcellular vinyl
Material Group	Vinyl
Process	Foaming

Sof-Tred Plus™ Grey

Art. nr.	Dimension (cm)	Weight (kg)	Height (cm)
409R0348GY	122cm x 18.3m	62	0.94
409R0324GY	60cm x 18.3m	31	0.94
409C0324GY	60cm x linm	1.7	0.94
409R0336GY	91cm x 18.3m	46	0.94
409S0335GY	91cm x 150cm	3.8	0.94
409S0323GY	60cm x 91cm	1.6	0.94
409C0348GY	122cm x linm	3.4	0.94
409C0336GY	91cm x linm	2.6	0.94

Sof-Tred Plus™ Black/Yellow

Art. nr.	Dimension (cm)	Weight (kg)	Height (cm)
409C0336BY	91cm x linm	2.1	0.94
409R0348BY	122cm x 18.3m	51	0.94
409R0324BY	60cm x 18.3m	26	0.94
409C0324BY	60cm x linm	1.7	0.94
409R0336BY	91cm x 18.3m	38	0.94
409C0348BY	122cm x linm	2.8	0.94
409S0335BY	91cm x 150cm	3.2	0.94
409S0323BY	60cm x 91cm	1.3	0.94

Sof-Tred Plus™ Black

Art. nr.	Dimension (cm)	Weight (kg)	Height (cm)
409R0348BL	122cm x 18.3m	62	0.94
409R0324BL	60cm x 18.3m	31	0.94
409C0324BL	60cm x linm	1.7	0.94
409R0336BL	91cm x 18.3m	46	0.94
409C0336BL	91cm x linm	2.6	0.94
409C0348BL	122cm x linm	3.4	0.94
409S0323BL	60cm x 91cm	1.6	0.94
409S0335BL	91cm x 150cm	3	0.94